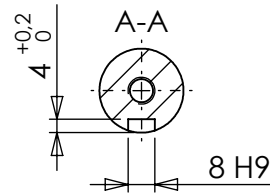


WARNING!

ROTATING SHAFTS MARKED
ARE NOT SHIELDED.
ANY SHAFT AND COUPLING NOT
GUARDED BY LOCATION MUST BE
SHIELDED BY AN INTERACTIVE
GUARDING SYSTEM.
BONDIOLI & PAVESI DECLINES
RESPONSIBILITY IF PROPER GUARDS
ARE NOT PROVIDED AND MAINTAINED.



a	Sostituiti semigusci (erano 19025000I e 19025000L) e tappo (era 373028000). Variata altezza, era 68. Creato minidisegno.	26/07/2012	Pini
Rev.	Descrizione	Data	Disegnato

MONTAGGIO / GEAR ARRANGEMENTS 	RAPPORTO / RATIO 1:2.78	TIPO / TYPE 1020	CLIENTE / CUSTOMER		
	GIRI IN ENTRATA / INPUT SPEED 540	TIPO DI MACCHINA / TYPE OF IMPLEMENT	PESO / WEIGHT (Kg) 5.5	DESEGNATO / DESIGNED BY Pini	
	POTENZA IN ENTRATA / INPUT POWER 12 CV - 9 kW	RIF.CLIENTE / CUSTOMER REF.	STUDIO / CONCEPT DRAWING	DATA / DATE 25-07-2012	
		CODICE / CODE S1020278R210		REV. a	